

Uploading data to Advisor Pro

Connect and upload data

1

Your healthcare professional will send you an invitation email to Advisor Pro.

Access the email and tap on the link to set up your account password.

Confirm your acceptance of the Advisor Pro Terms of Use and Privacy Policy.

Enter your credentials and tap on **Sign up**

Confirmed Email:
user@email.com

Please select your new password:

Password

Confirm Password

I have read and agreed to Advisor Pro
Privacy Policy and Terms of Use

Sign Up

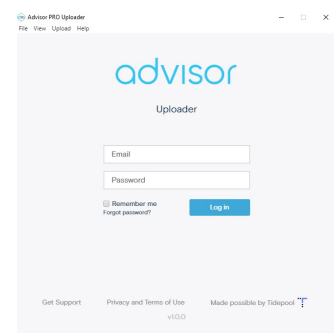
2

Download Advisor Uploader from dreamed-diabetes.com/uploader

3

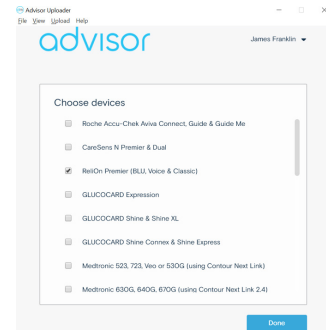
After Installing the software, open it and login using your email and the password.

It is recommended to mark the **'remember me'** check box.



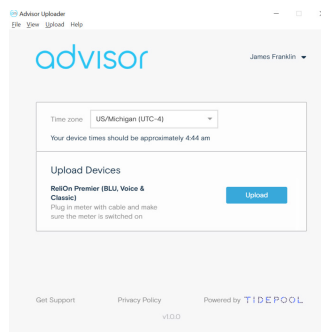
4

Choose your devices from the list and click on **Done**



5

Connect your device to the computer using the appropriate cable and follow the instruction to upload your device.



Your data was successfully uploaded!

Now it can be reviewed by you or your care team using Advisor Pro.

To connect your Dexcom account, refer to **“Getting Started”** quick guide.